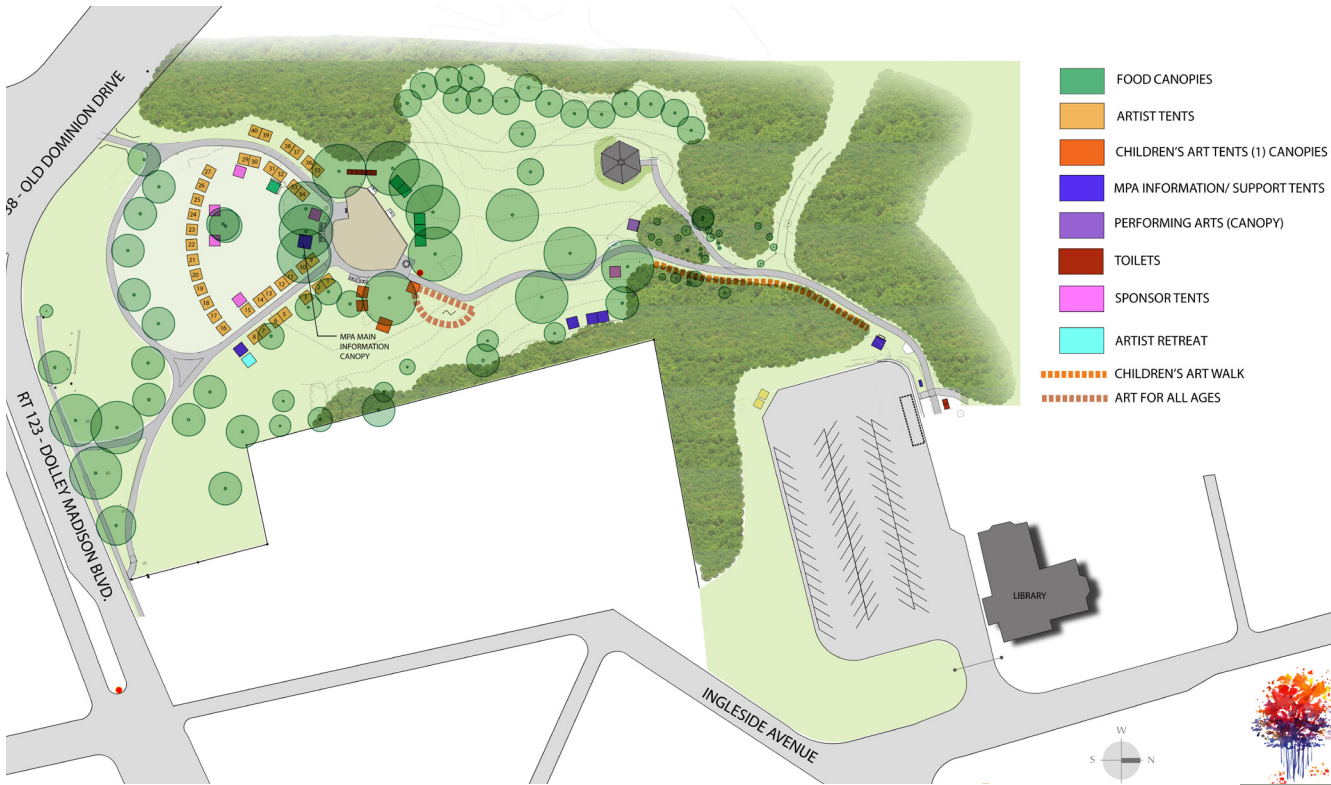


WELCOME TO MPAartfest! On October 4th, 2009 **MPAartfest** will transform **McLean Central Park** into a lively landscape of mini art galleries showcasing and offering for sale the work of a diverse group of 38 juried artists. **MPAartfest** includes activities to captivate art-lovers of all ages. Stroll through the **Children's ArtWalk**, sponsored by **McLean Community Foundation**, to experience the work of young artists from McLean area schools. Budding artists may create their own works of art at the **Children's ArtTent**, coordinated by **New Dominion Women's Club**. Visit the **Art For All Ages** display and watch live model drawing - you can even try it yourself. The Gazebo Stage will feature a variety of live performances throughout the day.



MPAartfest CORPORATE AND COMMUNITY SPONSORS

Chairman's Circle
CharityWorks GreenHouse
Communications Resources, LLC
Windows Catering Company

Leadership Circle
Cox Communications
Lori Wiseman Design
McLean Community Foundation

Major Benefactor
Dominion
Federal Policy Group
HITT Contracting, Inc
McLean Properties LLC
Monett Foundation
Rotary Club of McLean

Benefactor
Butz • Wilbern
Deirdre Maull, MDM, MS
Montessori School of McLean

Patron
BOWA Builders
Bowers Design and Build
William B. Folsom Photography
Interstate Worldwide Relocation Services
Madison Building
McLean Self Storage
Lebanese Taverna
Wheat's Lawn and Landscape
Sharon Godfrey, State Farm Insurance

Volunteer Organizations
New Dominion Women's Club

Woman's Club of McLean
Boy Scouts
Friends of McLean Community Center

And more than 150 individual MPA volunteers
Thanks to the Montessori School of McLean for shuttles and drivers.

Recycling provided by Sierra Club

MPAartfest is grateful for the support of Fairfax County Supervisor John Foust, the Fairfax County Park Authority, the McLean Community Center, the Friends of the McLean Community Center, the Friends of McLean Central Park, the New Dominion Women's Club, and the many corporate and individual sponsors who make the event possible.



Sunday,
October 4, 2009
10am to 5pm
in McLean Central Park
www.mpaart.org

Schedule of Performances on the Gazebo Stage

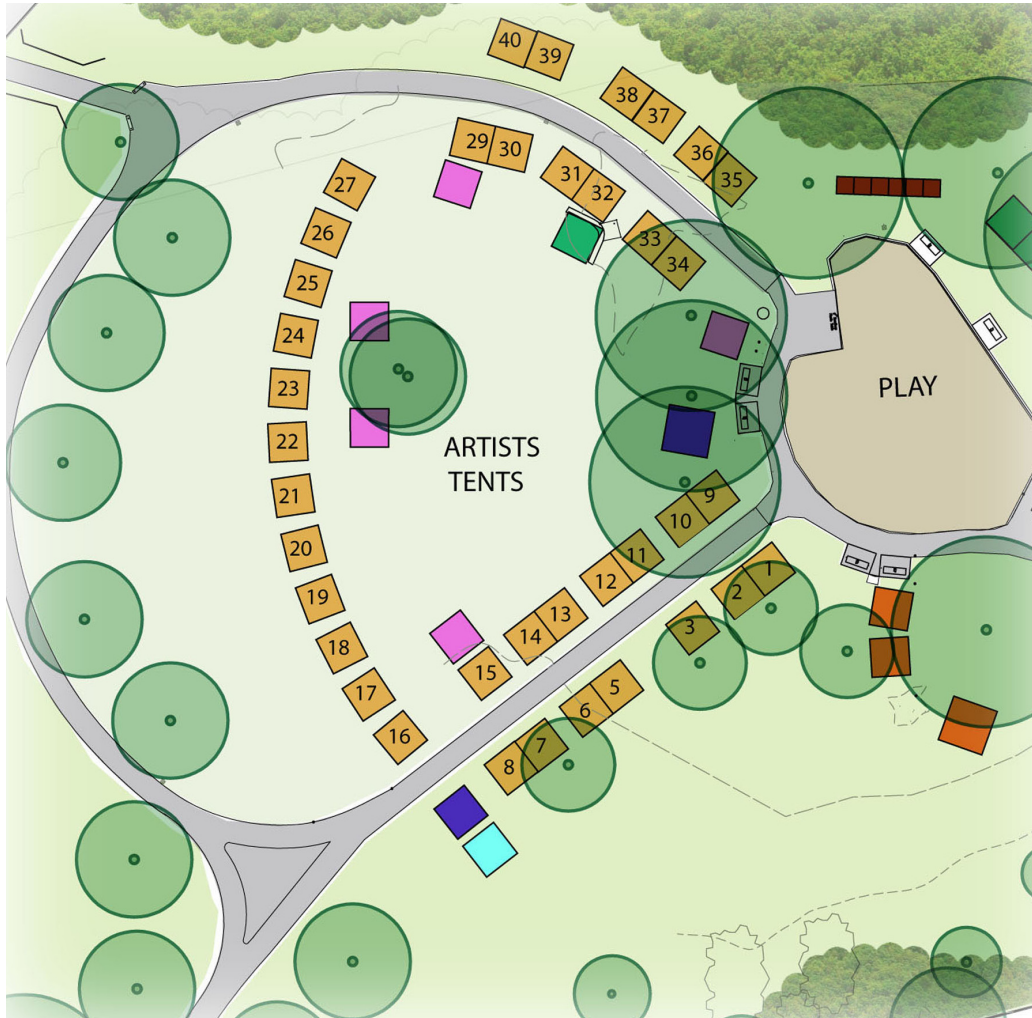
- 10 - 11:45 Square Trio
- 12 - 1:45 Scott Ramminger and the CrawStickers
- 2 - 2:45 Members of the McLean Symphony
- 3 - 4:45 Musicians from the Potomac School

Try Delicious Refreshments from these Local Restaurants:

- Deli Italiano
- Lebanese Taverna
- Moorenko's Ice Cream Café
- Old Fashioned Kettle Korn Man
- Greenberry's Coffee and Tea Company



The mission of **McLean Project for the Arts (MPA)** is to exhibit the work of emerging and established artists from the mid-Atlantic region; to promote public awareness and understanding of the concepts of contemporary art; and to offer instruction and education in the visual arts. **MPA/Corcoran**, an educational partnership, offers art classes for children and adults taught by instructors from the **Corcoran College of Art + Design**. **MPA** also presents the **Art Reach** program for area schools, gallery talks, and day trips to area museums and galleries.



MPAartfest 2009 Artist Tent Assignments

- | | |
|----------------------------|-----------------------------------|
| 1. Anne Barbieri | 21. Susan Bikoff |
| 2. J.J. Singh | 22. Hilary Hachey |
| 3. Susan Finsen | 23. Cora Rupp |
| 4. Unassigned | 24. Cindy Grisdela |
| 5. Joy Every | 25. Jill Banks |
| 6. Marty McGihon | 26. Gisele Nimic |
| 7. Julie Lansaw | 27. Cherie Lester |
| 8. Novie Trump | 28. Unassigned |
| 9. AnaMarie Paredes | 29. Caleb Woodard |
| 10. Eileen Olson | 30. Betty Ganley |
| 11. Laurie Fields | 31. Elaine Elinsky |
| 12. Michele Green | 32. Val Mahan |
| 13. OH. Jenna Klimchak | 33. Curtis Woody |
| 14. Karen Deans | 34. Laura Peery |
| 15. Bruce Fransen | 35. Connie Slack |
| 16. Marcia Staiger | 36. Ben Keys |
| 17. Mollie Vardell | 37. Tavia Brown |
| 18. Loren Rosenstein | 38. Ann Marie Williams |
| 19. Chris Monette Appleton | 39. Thomas Bucci |
| 20. Lori Katz | 40. Jennifer Bernhard
Hatfield |

Parking and Directions

McLean Central Park is located at the intersection of Dolley Madison Boulevard (Rte. 123) and Old Dominion Drive. Convenient satellite parking will be available at Cardinal Bank located at the intersection of Dolley Madison Boulevard (Rte.123) and Beverly Road. From there, free and frequent shuttle bus service will ferry passengers to and from the event site. A drop-off area, including Handicap Access spaces, will be located in the parking areas at Dolley Madison Library and the McLean Community Center on Ingleside Avenue. On-site golf carts will provide assistance to event patrons on request. **Please do not park on neighborhood streets and there will be NO LEFT TURNS allowed onto Ingleside from Dolley Madison Blvd (Rte. 123 going toward Chain Bridge).** A rain-or-shine event, **MPAartfest** will move inside the McLean Community Center, adjacent to the park, in case of inclement weather.