

Non-profit Org.  
U.S. Postage  
PAID  
McLean, Virginia  
Permit No. 39

RETURN SERVICE  
REQUESTED

McLean's First Outdoor Arts Festival!

Location: McLean Central Park  
Date: Sunday, October 14  
Time: 10 am – 5 pm  
Admission is Free!

MPA artfest  
connecting art and community



McLEAN PROJECT FOR THE ARTS  
IN RESIDENCE AT THE McLEAN COMMUNITY CENTER  
1234 INGLETSIDE AVENUE, McLEAN, VIRGINIA 22101  
PHONE: 703.790.1953 WWW.MPART.ORG

Gallery Hours

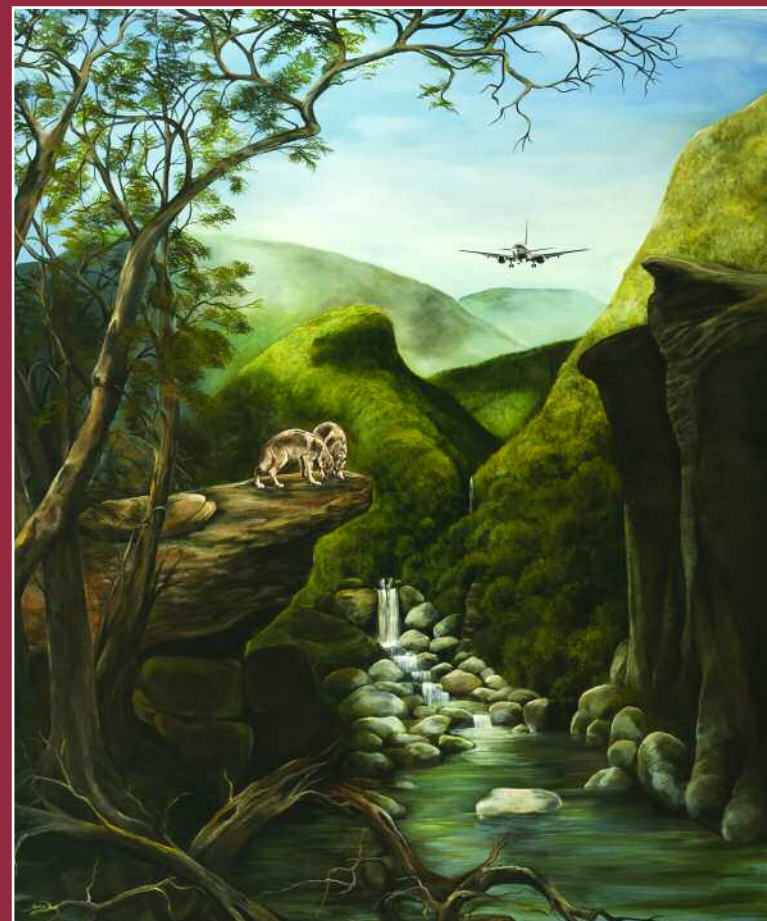
Tuesday through Friday: 10 am – 4 pm  
Saturday: 1pm – 5 pm



# MPA

McLEAN PROJECT FOR THE ARTS

news and events – fall/winter 2007



## Letter from the Executive Director



Join us for MPA artfest, McLean's first ever outdoor arts festival on Sunday, October 14. MPA artfest Chair Bari Livingston, committee chairs and scores of volunteers have been planning this

event for more than a year! McLean Central Park will become a landscape of mini-galleries featuring art on display and for sale by more than 30 regional artists juried into this event. Enjoy live music, refreshments and a children's art tent with activities for our younger artists. This is an event you won't want to miss!

We also invite you to visit the gallery—we have many exciting exhibitions scheduled this year. Our season opens September 20 with shows that will captivate your senses and engage your intellect. Check out the exhibitions page for details.

We welcome our first Director of Development, Sheri McGrath, a long-time McLean resident and supporter. Sheri joined us in September to lead our fundraising and grant writing efforts, bringing to the table years of experience in political fundraising.

This fall also marks the 20th anniversary of the hiring of our first paid employee, Administrative Director Roxy Vaughn. A three-year salary assistance grant from the Arts Council of Fairfax County in 1987 enabled MPA to begin developing its professional staff—now comprising our first full-time and 8 part-time staff members. Congratulations Roxy, and thank you for your dedication to the McLean community, our artists and our mission since November 1987!

*Nancy Powers Perry*

Nancy Powers Perry  
MPA Executive Director

### Volunteer Focus



MPA artfest is very fortunate to have Jack Wilbern, an architect and planner with Butz-Wilbern, Ltd, at the helm of its Logistics Committee. Jack's work with

MPA follows many years of pro bono work for the McLean community. He was previously with the McLean Planning Committee in 1998, and has contributed to many planning and revitaliza-

tion efforts in downtown McLean as well as to McLean Central Park improvements including the gazebo, signage and landscaping projects.

Jack has two children, a sophomore at Virginia Tech and a junior in the IB program at Marshall High School. He lives in and was the architect/planner for the Blueberry Hill co-housing community on the backside of the Potomac Vegetable Farm.

The mission of the McLean Project for the Arts is to exhibit the work of emerging and established artists from the mid-Atlantic region; to promote public awareness and understanding of the concepts of contemporary art; and to offer instruction and education in the visual arts.

Cover image: Josephine Haden, *Solitude*, acrylic on canvas, 72 x 60 inches, 2006.

## MPA Exhibitions

September 20 – November 3

Reception: Thursday, September 20, 7 – 9 pm

### Postcards From the Real Works by Josephine Haden

Emerson Gallery

Using subtle but efficient compositional devices, Arlington artist Josephine Haden toys with perceptual expectations in these large-scale landscape based paintings of open-ended allegorical vignettes. Blending open sky, vast bodies of water and soaring vistas with magazine, vacation and animal imagery, Haden creates visual stories that ask as many questions as they answer. Like postcards from another time and place, these paintings offer viewers a glimpse into a world where imagination transforms the mundane and banal into the extraordinary and unexpected.

### Genomes and Daily Observations

An Installation by Suzanne Stryk

Atrium Gallery

In this installation, Virginia artist Suzanne Stryk brings together a grid of exquisitely poetic drawings of natural objects and modern

genetic symbols, an antique desk depicting the workspace of a nineteenth century natural historian, and a mirror reflecting both the images on the walls and the image of the current viewer. Using these basic elements, Stryk contrasts and blends today's world of high tech science with the more intimate knowledge of nature gained through the careful and close observational scientific techniques of the past. At the heart of this work are questions regarding the reconciliation and coexistence of scientific knowledge with a personal reverence for the mysteries of nature.

### Fairy Tales

Paintings by Joy Every

Ramp Gallery

Landscape, fantasy and fairy tale co-exist in these expressive paintings which draw heavily on images from the subconscious and both dark and light universal symbolic content. Color, pattern, texture and other formal compositional elements are explored within the context of the landscape, while mysterious imaginary worlds are seamlessly blended with the familiar.



Josephine Haden, No Trespassing, acrylic on canvas, 60 x 76 inches, 2004.



MPA is funded in part by the National Endowment for the Arts, the Virginia Commission for the Arts, and the Arts Council of Fairfax County from funds provided by Fairfax County. A 501(c)(3) organization, MPA presents the visual arts program for the community at the McLean Community Center in a public/private partnership with the McLean Community Center and Fairfax County.

## MPA Exhibitions



Suzanne Stryk, Woodpecker, mixed media on paper, 10 x 14 inches, 2005 - 2006.

November 29 – January 12, 2008

Reception: Thursday, November 29, 7 – 9 pm

### Transform, Transport, Transpose: Sculpture by Leigh Taylor Mickelson, Judit Varga, and Lars Westby

Emerson Gallery

Each of these artists begins with ordinary objects or shapes and transforms them into highly animated sculptural objects, imbuing them with humor, movement and poetry in the process.

### McLean Art Club Juried Exhibit

Ramp Gallery

An eclectic mix of work by members of the McLean Art Club.

January 24 – February 23, 2008

Reception: Thursday, January 24, 7 – 9 pm

### Personal Geometry

Emerson Gallery

This exhibit features works by artists who rely heavily on the precision of geometry as an underlying compositional structure while also employing stylistic techniques expressing charged and emotional content.

### New Work by Karey Kessler

Atrium Gallery

In these diminutive paintings, Washington artist Karey Kessler strives to capture the mystical, the conceptual, the poetic and the mundane. Reminiscent of treasure maps, yet leading to no specific location, these images evoke the conceptual landscape of both mind and memory.



Joy Every, Blood of an Innocent, acrylic on canvas, 51 x 53-1/2 inches, 2007.

## MPA Classes

### ABRAKADOODLE

This popular series of imaginative art classes for young children is based on the learning principles of Jean Piaget.

### Twoosy Doodlers

Ages 20-36 months

Six-week sessions beginning the weeks of 9/17 and 10/30

### Mini Doodlers

Ages 3-6

Six-week sessions beginning the weeks of 9/17 and 10/30

### Doodlers

Ist to 3rd graders

Six-week sessions beginning 9/22

### Holiday Card Workshop

Preschoolers-6th graders

11/17 9:30-10:30 am

### Splat Workshop

Ages 3-12

12/18 1-4 pm or 4:30-7:30 pm

### Wild and Wacky-Holiday Art Camp

Ages 3-6

12/26-12/28 9:30 am-12 noon

### CHILDREN & TEEN ART CLASSES

#### Drawing, Painting & Making Things

Grades 1-3 Instructor: Anthony Brock

9/24-10/29 Mon. 1:30-3:30 pm

11/5-12/10 Mon. 1:30-3:30 pm

#### CORCORAN

The following classes are offered in cooperation with the Corcoran College of Art + Design and are taught by Corcoran Faculty.

#### Story Art

A Parent-Child Workshop for ages 3-5

Instructor: Corcoran Faculty

10/5-10/26 Fri. 1-2 pm

### NEW! Modern Masters

Ages 5-8 Instructor: Corcoran Faculty

9/23-11/18 Sun. 2:30-4:30 pm

### Junior Studio I

Ages 9-12 Instructor: Michael Cantwell

9/22-12/15 Sat. 9:30 am-12:30 pm

### Cartooning & Story Illustration

Ages 8-12 Instructor: Erik Swanson

9/25-12/4 Tues. 4:15-6:15 pm

### Pencils to Paint

Ages 8-12 Instructor: Erik Swanson

9/27-12/6 Thurs. 4:15-6:15 pm

### Cartooning & Story Illustration

Ages 12-16 Instructor: Erik Swanson

9/24-12/10 Mon. 4:15-6:15 pm

### Drawing Fundamentals

Ages 12-16 Instructor: Rula Jones

9/22-10/20 Sat. 1-3:30 pm

10/27-12/15 Sat. 1-3:30 pm

### Painting Fundamentals

Ages 12-16 Instructor: Rula Jones

9/26-10/31 Wed. 4:15-6:15 pm

11/7-12/19 Wed. 4:15-6:15 pm

### ADULT ART CLASSES

#### CORCORAN

The following classes are offered in cooperation with the Corcoran College of Art + Design and are taught by Corcoran Faculty.

#### In My Home

Instructor: Corcoran Faculty

9/21-11/2 Fri. 9:15 am-12:15 pm

#### NEW! Drawing Workshop: The Figure

Instructor: Corcoran Faculty

9/24-10/29 Mon. 9:15 am-12:15 pm

## MPA Classes & Public Programs

### NEW! Drawing Workshop: The Figure in Color

Instructor: Corcoran Faculty

11/5-12/10 Mon. 9:15 am-12:15 pm

### Drawing Studio

Instructor: David Carlson

9/26-12/5 Wed. 7-10 pm

### Intermediate Drawing

Instructor: Marise Riddell

9/26-12/5 Wed. 9:15 am-12:15 pm

### Painting with Acrylics

Instructor: Julie Lansaw

9/27-12/6 Thurs. 9:30 am-12:30 pm

### Abstract Painting

Instructor: Marise Riddell

9/26-12/5 Wed. 1-4 pm

### NEW! Painting Workshop: Still Life

Instructor: Corcoran Faculty

9/24-10/29 Mon. 7-10 pm

### NEW! Painting Workshop: Portraiture

Instructor: Corcoran Faculty

11/5-12/10 Mon. 7-10 pm

### NEW! Mixed Media Painting

Instructor: Corcoran Faculty

9/27-12/6 Thurs. 7-9:30 pm

### Watercolor-Beginning

Instructor: Barbara Januskiewicz

9/25-11/27 Tues. 1-4 pm

### Watercolor-Continuing

Instructor: Barbara Januskiewicz

9/25-11/27 Tues. 9:15-12:15 pm

### OPEN STUDIO

#### Open drawing sessions with models

Tuesdays 7-9:30 pm, \$8

Thursdays 1-4 pm, \$9

For a complete listing of classes and for further details about our public programs, visit our website: [www.mpaart.org](http://www.mpaart.org), or call MPA at 703.790.1953.

## News & Special Events



Left to right: Benefit Co-chair Susan Gerber; Chairman of the Board Robert McDowell; Executive Director Nancy Perry; Guest of Honor Ned Rifkin, Smithsonian Institution Under Secretary for Art; Vice Chair Suzie Bissell; Mark Lowham of WEST\*GROUP; Benefit Co-chair Devereux Socas

## Spring Benefit Past & Future

Our annual spring gala was a huge success, thanks to the hard work of co-chairs Devereux Socas and Susan Gerber, hosts Tracy and Jim Millar and our many patrons, benefactors and sponsors. More than 300 MPA supporters reveled in the spectacular setting and gorgeous spring weather. The Spring Benefit contributes approximately \$50,000 annually in net proceeds to MPA's programs and exhibi-

### In Memoriam

We've lost another dear friend of MPA. Joanne Flaherty Suter, wife of Dr. Emanuel Suter, passed away peacefully Thursday, August 9. Jo served as a member of MPA's Board of Directors for more than a decade, and was an extraordinary MPA volunteer for nearly twenty years. Jo and Manny have always been strong supporters of the arts in our community. We will miss her.

In lieu of flowers, the Suter family has requested contributions be directed to MPA in Jo's memory.

## News & Special Events

### MPA artfest Coming to Town Oct. 14



Come to MPA's first ever outdoor arts festival for family-friendly fun and the opportunity to be among the first to view and purchase work from a diverse group of notable juried artists. Sunday, October 14, from 10 am to 5 pm, McLean Central Park is transformed into a lively landscape of mini galleries displaying paintings, drawings, prints, sculpture, photography and fine crafts.

The Gazebo will feature a variety of performers including the R&B rhythms of the Tommy Lepson Band, vintage rock by the Cutaways, the jazz sounds of the Oscillators, young voices from the World Children's Choir, and an ensemble from the McLean Orchestra.

The Art Walk features art created by elementary school students and budding artists will create their own works of art in the

### Roxy Vaughn Celebrates 20th Anniversary at MPA



Roxy Vaughn

By Andrea Pollan, Director, Curators Office, and former MPA Exhibitions Director

Every arts organization relies on the vision and dedication of its staff members. When I started at McLean

Project for the Arts way back in the early 90s, Roxy Vaughn warmly showed me the ropes and answered all of my questions with breath-taking patience.

Back in those earlier days, when it was mostly Roxy, our beloved Gerry Brock, and me (and the assistance of numerous incredible volunteers and board members), I always envisioned us as a big dog. Gerry was the head with her keen sense and instincts developing a vision for the venue; Roxy was the backbone, with her ability to carry the organization flexibly through its many permutations; and I was the tail (literally wagging the dog) trying to make them go in whatever direction I could—sometimes flapping wildly with

Children's Art Tent. Visitors can treat themselves to a delicious selection of food and beverages from McLean restaurants including Lebanese Taverna, Moorenko's Ice Cream Café, Greenberry's, and Vinson Hall.

Convenient free satellite parking will be available at Cardinal Bank located at the intersection of Dolley Madison Blvd. (Route 123) and Beverly Road. Free and frequent shuttle buses will ferry passengers to and from MPA artfest. If it rains, the festival will move indoors into the McLean Community Center.

Admission to MPA artfest is free. Major sponsors include the McLean Community Center and Cox Communications and supporting sponsors include the Fairfax County Park Authority, Dranesville Supervisor Joan DuBois' office, the McLean Chamber of Commerce, and the Arts Council of Fairfax County.

For more information you can go online to [www.mpaart.org/artfest.html](http://www.mpaart.org/artfest.html).

enthusiasm, sometimes hiding between the legs of the beast when things went wrong. We then were fortunate to add Sandy Treanor and Sharon Fishel to the mix and establish a rather wonderful matriarchy of leadership.

Roxy has all the good and sensible answers. She is one of those people you can always count on. Roxy was frequently cleaning up my little administrative messes. Pitching in when she saw someone was in need. Pinch-hitting on those days when everything was falling apart and taking a share of your load. Keeping an eye on the budget, making sure MPA always stayed in the black. When I think of the word, "dedication," there should be a photograph in the dictionary of Roxy Vaughn to illustrate it!

On days, when I cannot remember where I put my keys or why I entered a room, I smile and wish I had Roxy's amazing memory. I have never known someone with such a keen institutional memory! She is also blessed with that wonderful midwestern "horse sense" that I find so refreshing. It was a good mix of temperaments and sensibilities back then in the 90s, and I know Roxy's many talents, skills, energy, and clarity are still a driving force behind the success of my cherished McLean Project for the Arts. Happy 20th Anniversary, Roxy!

## MPA ArtReach

### ArtReach Expands Programs

ArtReach Director Sharon Fishel and artist Anthony Brock are gearing up for an expanded outreach to schools this season. Thanks to two generous grants, MPA was able to purchase a laptop computer and projector to take our programs into the schools and to increase the amount of time Sharon will be working with special education students and other students as a resident artist in the schools.

*Primary Geometries* (January-February 2008) is our featured exhibition for docent-led gallery tours for elementary school students. The tours and hands-on art activities will focus on geometric shapes and spatial relationships and incorporate concepts included in the math SOLs. We will again provide free bus transportation to MPA's galleries to Project Excel schools, schools designated by Fairfax County Public Schools as "at-risk" schools with large numbers of English as second language students or students who qualify for free or reduced lunches.

We will also serve schools with a diverse menu of in-school slide lectures and classroom art projects, after-school art workshops and artist visits to art clubs.

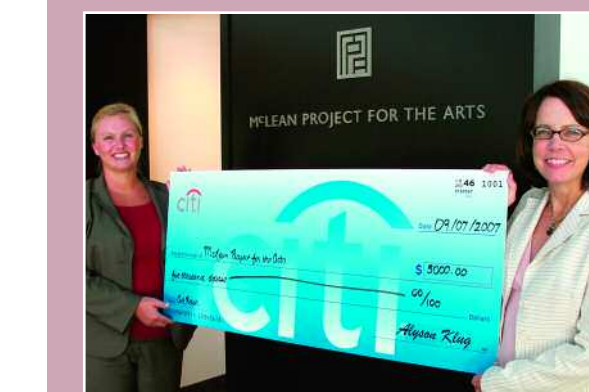


Children ponder the art of Margaret Boozar at the *Natural Inclinations* show, Jan-Feb 2007.

This past spring our new special education component provided in-gallery tours, art classes and follow-up slide talks and classroom art projects for high school students with special needs who do not receive art instruction or enrichment as part of their classroom instruction. Our ArtReach sessions are the only in-school art educational experience available to them. We are also reaching out to teens through a new program with the Old Firehouse Teen Center in McLean.

All of these programs are offered to schools free of charge. Please contact Roxy Vaughn at 703-790-1953 if you are interested in scheduling an activity for your school.

### Citigroup Foundation Gives MPA \$5,000 Grant for ArtReach



Kirsten Frances (left), manager of Citi Bank's McLean branch, presents MPA Executive Director Nancy Perry (right) with a \$5,000 grant from Citigroup Foundation to ArtReach, the MPA program that brings area students to our galleries, and educators and artists to area schools.